

PART OF THE N.W. 1/4, SEC. 34, T.6N., R.1W., S.L.B. & M.

HIGHLAND ADDITION
AMENDED

BLOCKS 3 & 4

IN OGDEN CITY

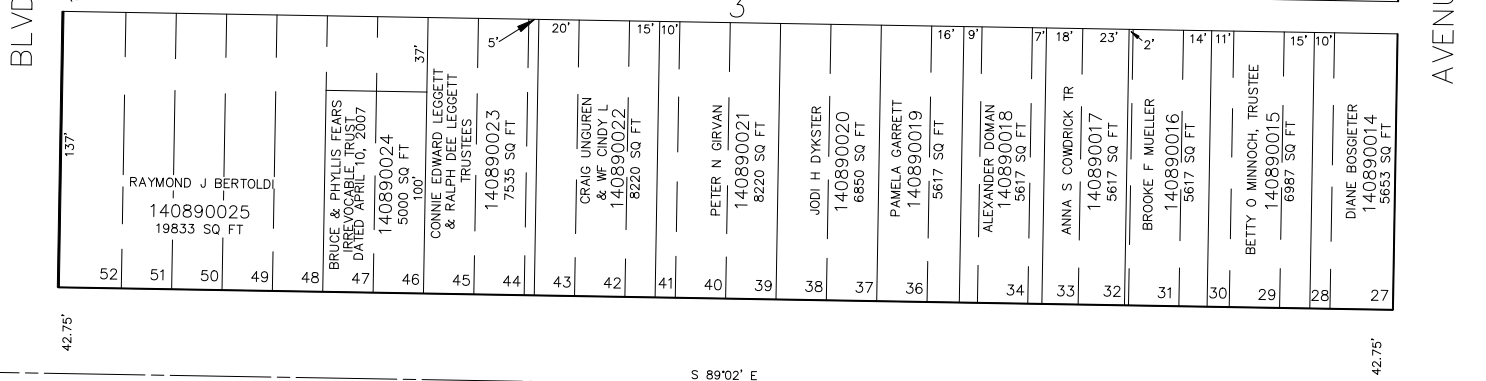
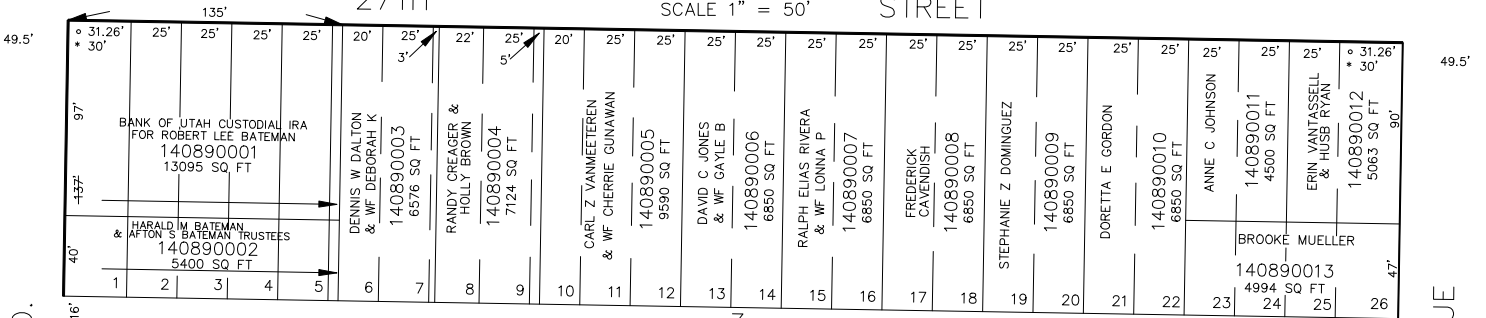
SCALE 1" = 50'

FOR COMPLETE ENG DATA SEE
ORIGINAL DEDICATION PLAT IN
BOOK 5, PAGE 1 OF RECORDS.

TAXING UNIT: 25 SEE BK. 2, PAGE 18

27TH

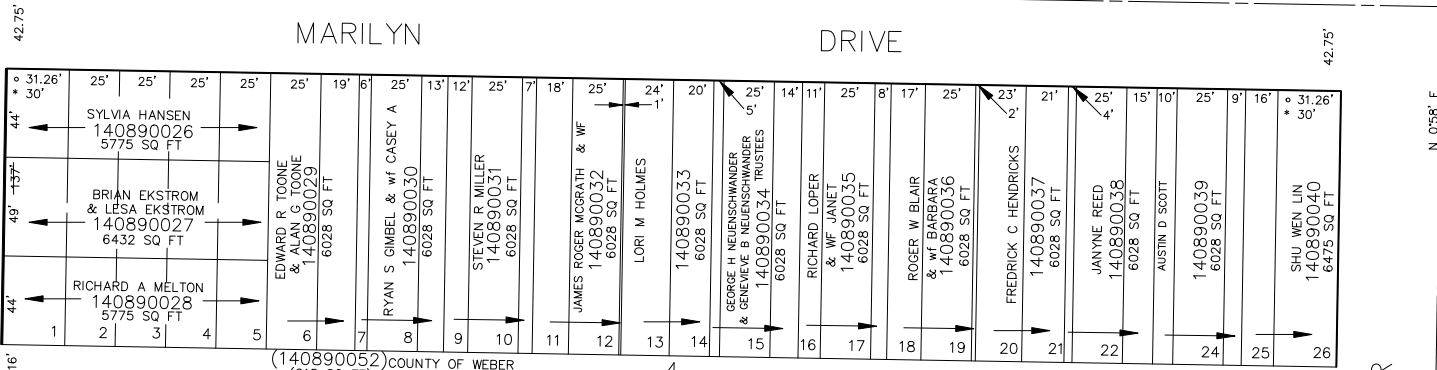
STREET



S 89'02" E

MARILYN

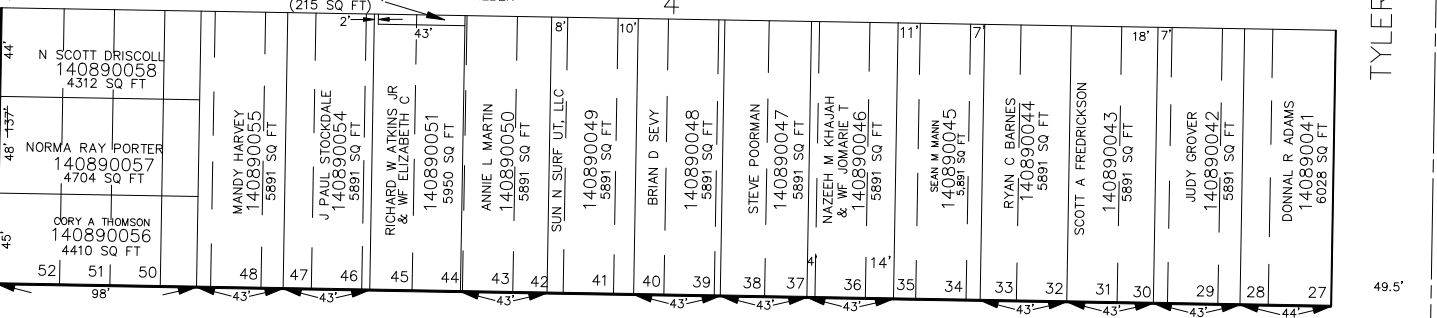
DRIVE



(140890052) COUNTY OF WEBER (215 SQ. FT.)

HARRISON

TYLER



28TH

STREET

S 89'02" E

SEE BK. 2, PAGE 15

SEE PAGE 88